

RX1 SERIES

ORDER CODE

RX1 - 12 - 30 - A

□: 1c
A: 1a
B: 1b

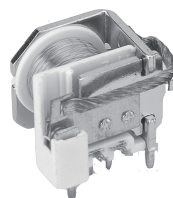
30: 30A
40: 40A

COIL VOLTAGE

06: DC 6V
09: DC 9V
12: DC 12V
24: DC 24V

TYPE

RX: Open-Frame(USA)
RX1: Sealed(USA)
RX2: Sealed(EUROPE)
RX3: Open-Frame(EUROPE)



Main Features:

- ┌UL and CUR safety approval.
- ┌European and American footprints both are available.
- ┌Open type, flux free, and sealed type available.
- ┌Special design for automotive car alarm applications.

COIL RATING (at 20°C)

NOMINAL VOLTAGE (VDC)	COIL RESISTANCE (Ω)($\pm 10\%$)	POWER CONSUMPT -ION(W)	NOMINAL CURRENT (mA)($\pm 10\%$)	PULL IN VOLTAGE (VDC)	DROP OUT VOLTAGE (VDC)	MAX. ALLOWABLE VOLTAGE (VDC)
6V	20 Ω	1.6W	300mA	70% MAX.	10% MIN.	130%
9V	45 Ω		200mA			
12V	90 Ω		133mA			
24V	362 Ω		63mA			

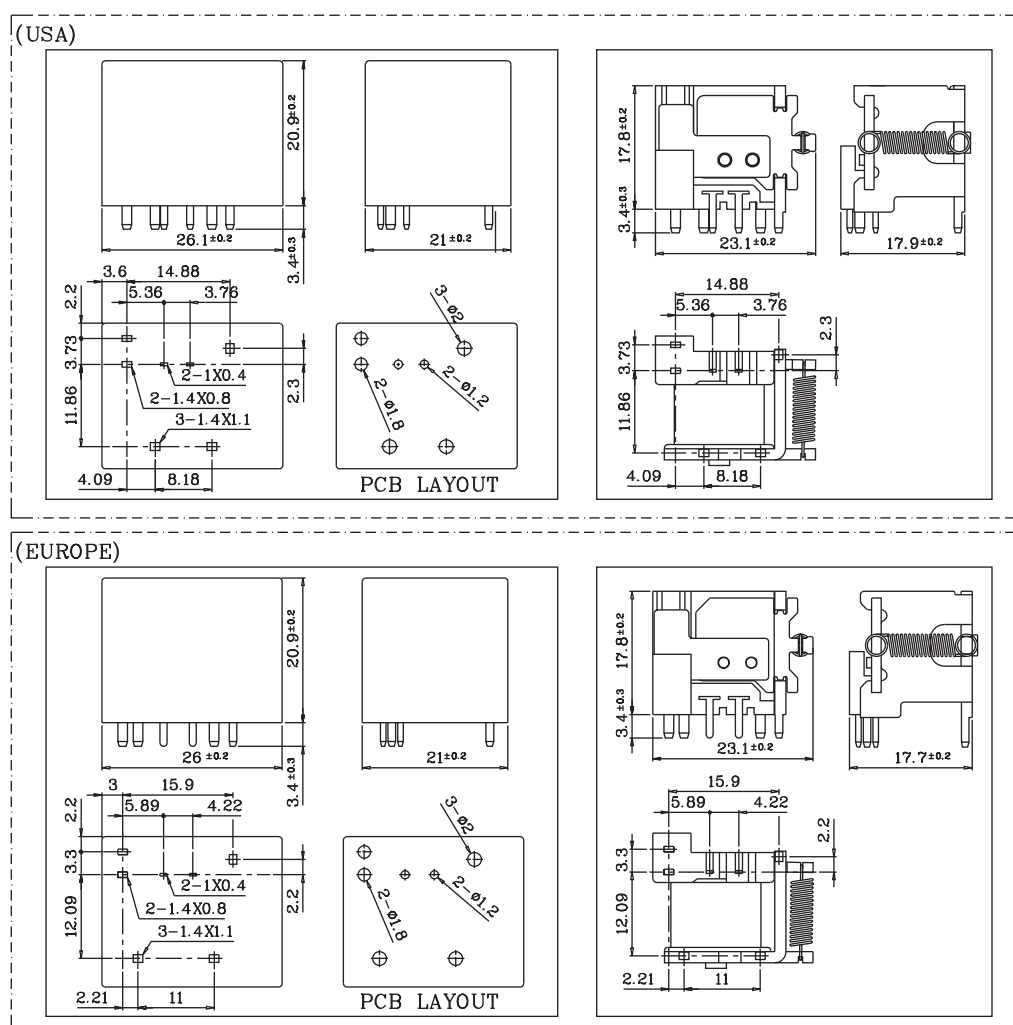
PERFORMANCE (at initial value)

Item \ Type	30A	40A
Contact Resistance	80m Ω Max. (initial value)	
Operate Time	10msec Max.	
Release Time	10msec Max.	
Dielectric Strength between coil & contact between contact	AC1000V (1min) AC500V (1min)	
Insulation Resistance	100M Ω Min. (DC500V)	
Operating Ambient Temperature	-30°C ~ +80°C	
Humidity	35 to 85% RH	
Vibration Resistance	10G (10~55Hz)(Dual amplitude: 2mm)	
Shock Resistance	10G	
Life Expectancy Mechanically Electrically	1,000,000 ops. Min.(1800 ops./h) 100,000 ops. Min.(1200 ops./h)	
Weight	(RX: 17g) (RX1: 20.6g) (about)	

CONTACT RATING

Item \ Type	30A	40A
Rated Carrying Current	DC14V 30A	DC14V 40A
Max. Allowable Current	35A	45A
Max. Allowable Voltage	DC 24V	
Max. Current (continual)	30A	40A
Contact Material	Ag alloy	

DIMENSIONS(Unit: mm)



WIRING DIAGRAMS(Bottom View)

