

# RT1 SERIES

## ORDER CODE

RT1-12-20-A

□: 1c

A: 1a

20: 20A

30: 30A

COIL VOLTAGE

TYPE

RT: Open-Frame

RT1: Sealed

05: DC 5V  
06: DC 6V  
09: DC 9V  
12: DC 12V  
15: DC 15V  
18: DC 18V  
24: DC 24V  
48: DC 48V



### Main Features:

- UL and CUR safety approval.
- Open type, flux free, and sealed type available.
- Up to 30amps switching in SPNO and 20amps switching in SPDT arrangement.
- Suitable for various industrial.

## COIL RATING (at 20°C)

NOMINAL VOLTAGE (VDC)	COIL RESISTANCE ( $\Omega$ )( $\pm 10\%$ )	POWER CONSUMPT -ION(W)	NOMINAL CURRENT (mA)( $\pm 10\%$ )	PULL IN VOLTAGE (VDC)	DROP OUT VOLTAGE (VDC)	MAX. ALLOWABLE VOLTAGE (VDC)
5V	27 $\Omega$	0.93W	185.0mA	80% MAX.	5% MIN.	150%
6V	40 $\Omega$		150.0mA			
9V	97 $\Omega$		93.0mA			
12V	155 $\Omega$		77.0mA			
15V	255 $\Omega$		59.0mA			
18V	380 $\Omega$		47.0mA			
24V	660 $\Omega$		36.0mA			
48V	2560 $\Omega$		18.8mA			

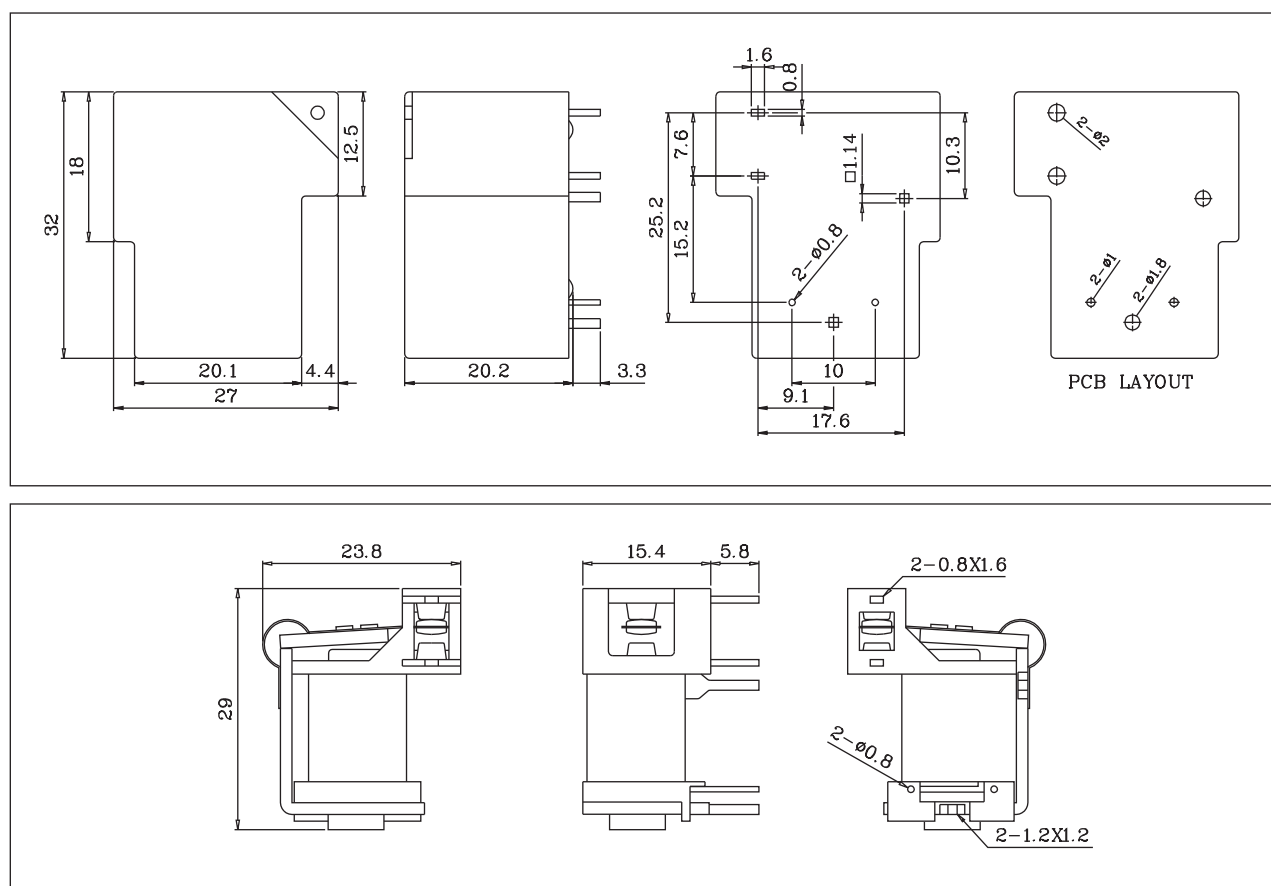
## PERFORMANCE (at initial value)

Item \ Type	1c	1a
Contact Resistance	100m $\Omega$ Max.(initial value)	
Operate Time	15msec Max.	
Release Time	10msec Max.	
Dielectric Strength between coil & contact between contact	AC1500V (1min) AC1500V (1min)	
Insulation Resistance	100M $\Omega$ Min.(DC500V)	
Operating Ambient Temperature	-35°C ~ +85°C	
Humidity	35 to 85% RH	
Vibration Resistance	10G (10~55Hz)(Dual amplitude:1.5mm)	
Shock Resistance	10G	
Life Expectancy Mechanically Electrically	10,000,000 ops. Min.(1800 ops./h) 100,000 ops. Min.(1200 ops./h)	
Weight	RT: 23g RT1: 28g(about)	

## CONTACT RATING

Item \ Type	1c	1a
Rated Carrying Current	NO: AC250V 30A AC125V 30A DC30V 30A	NC: AC250V 20A AC125V 20A DC30V 20A
Motor load	AC250V 2HP AC125V 1HP	
Max. Allowable Current	30A	30A
Max. Allowable Voltage	AC 250V	
Max. Current (continual)	30A	30A
Min. Load	DC10V 10mA	
Contact Material	Ag Alloy	

DIMENSIONS(Unit: mm)



### WIRING DIAGRAMS (Bottom View)

